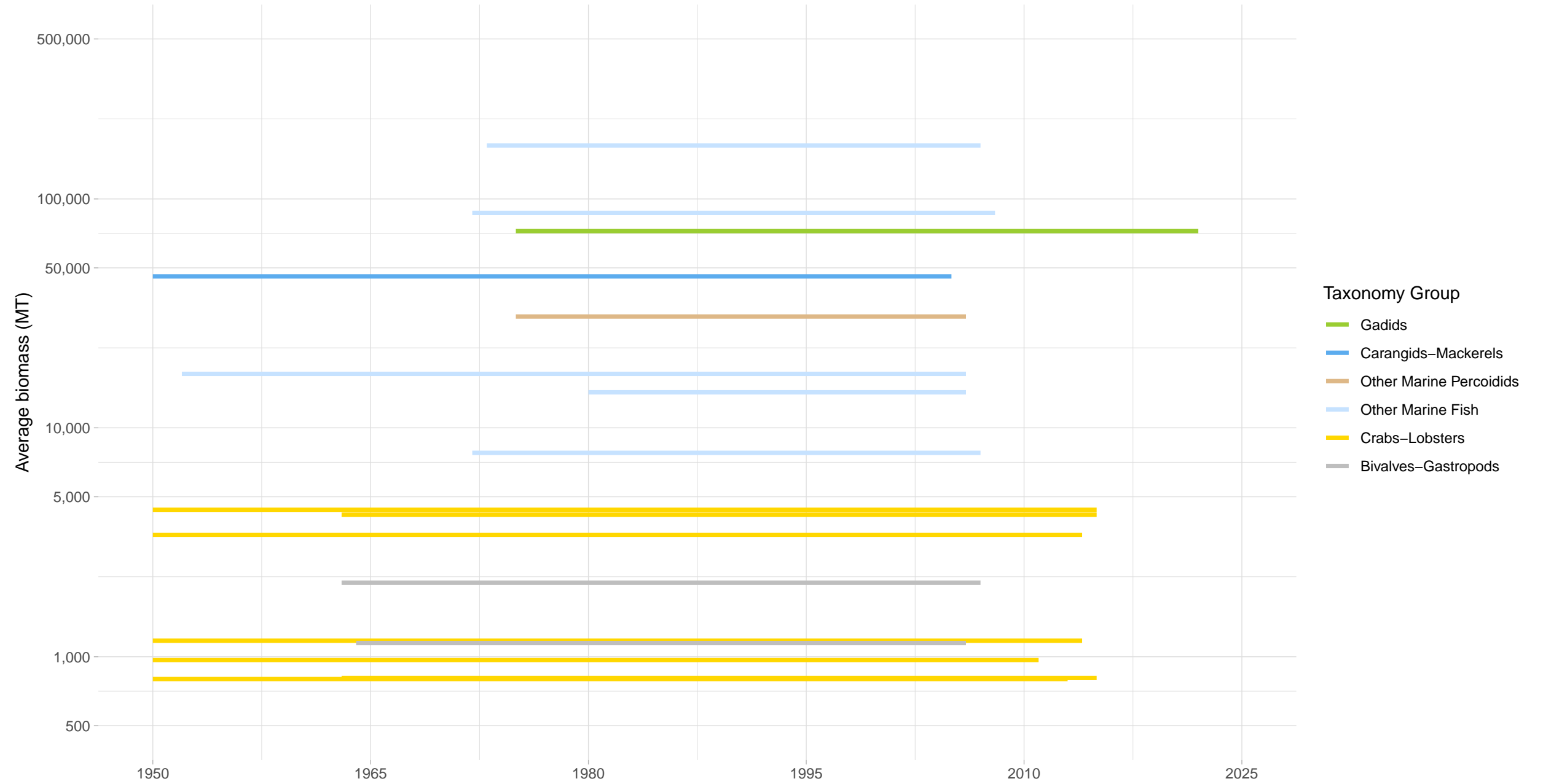
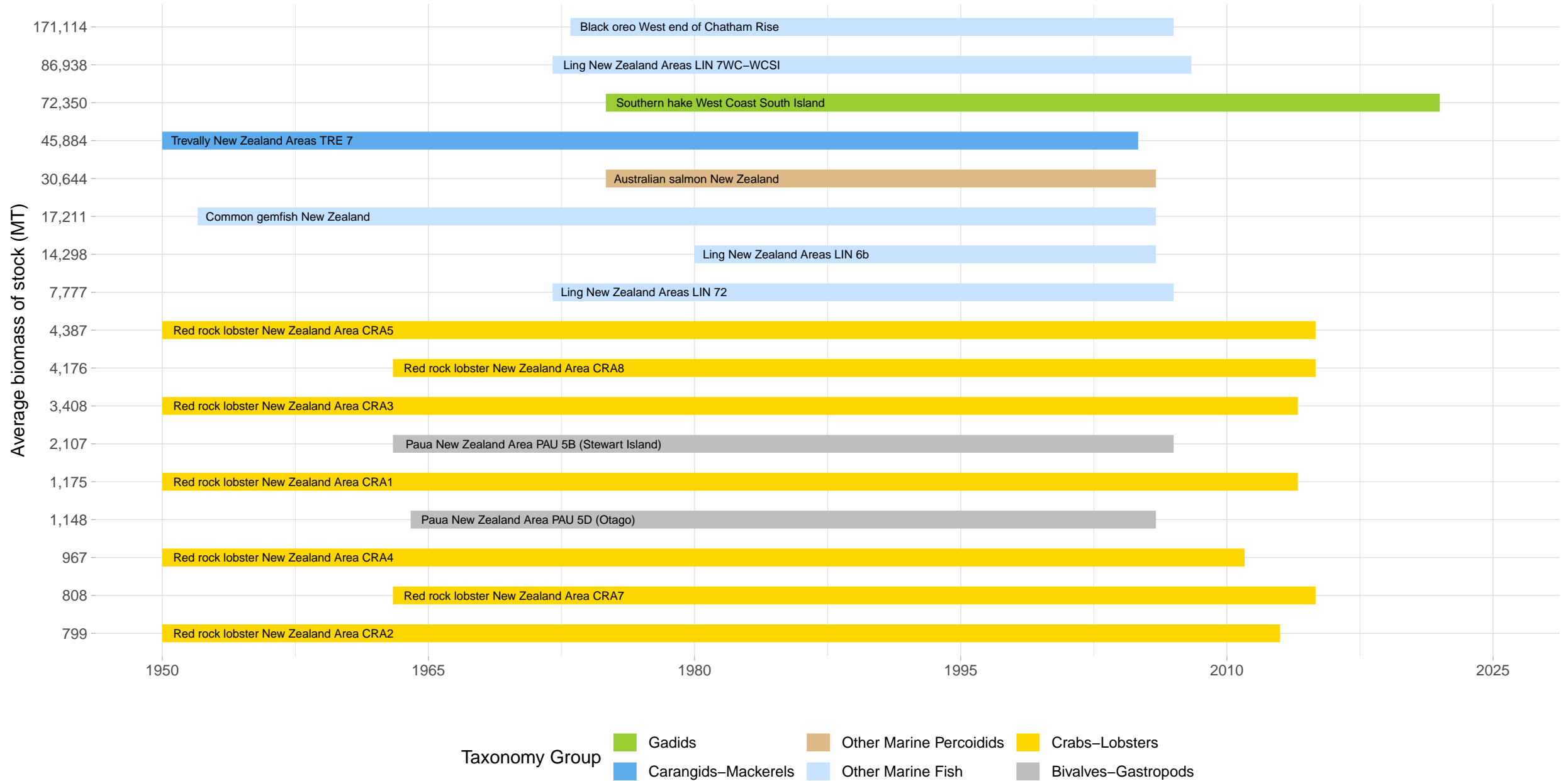


Biomass Coverage in New Zealand Region



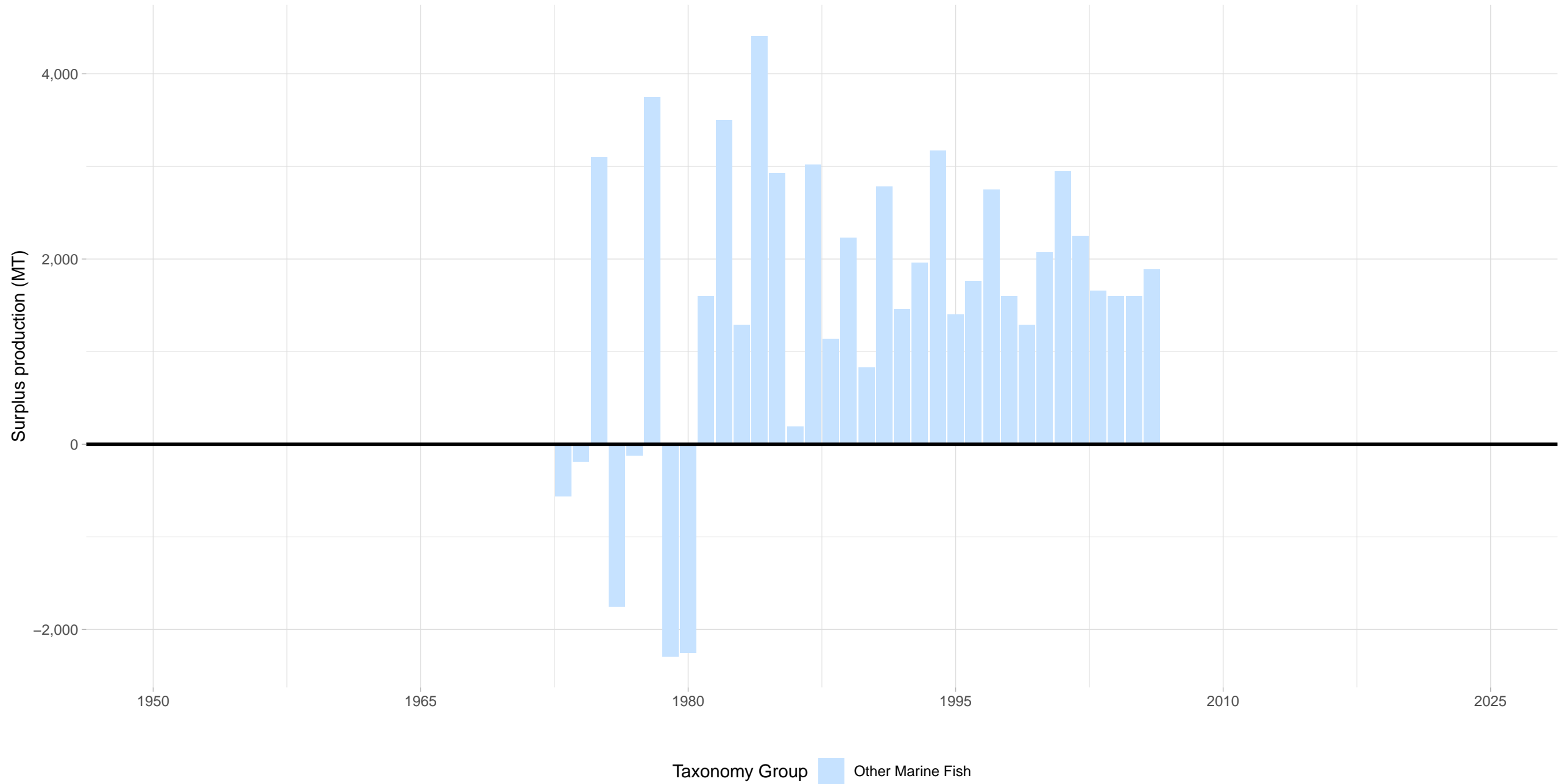
Biomass Coverage Over Time in New Zealand Region

Stocks ordered from lowest to highest average biomass



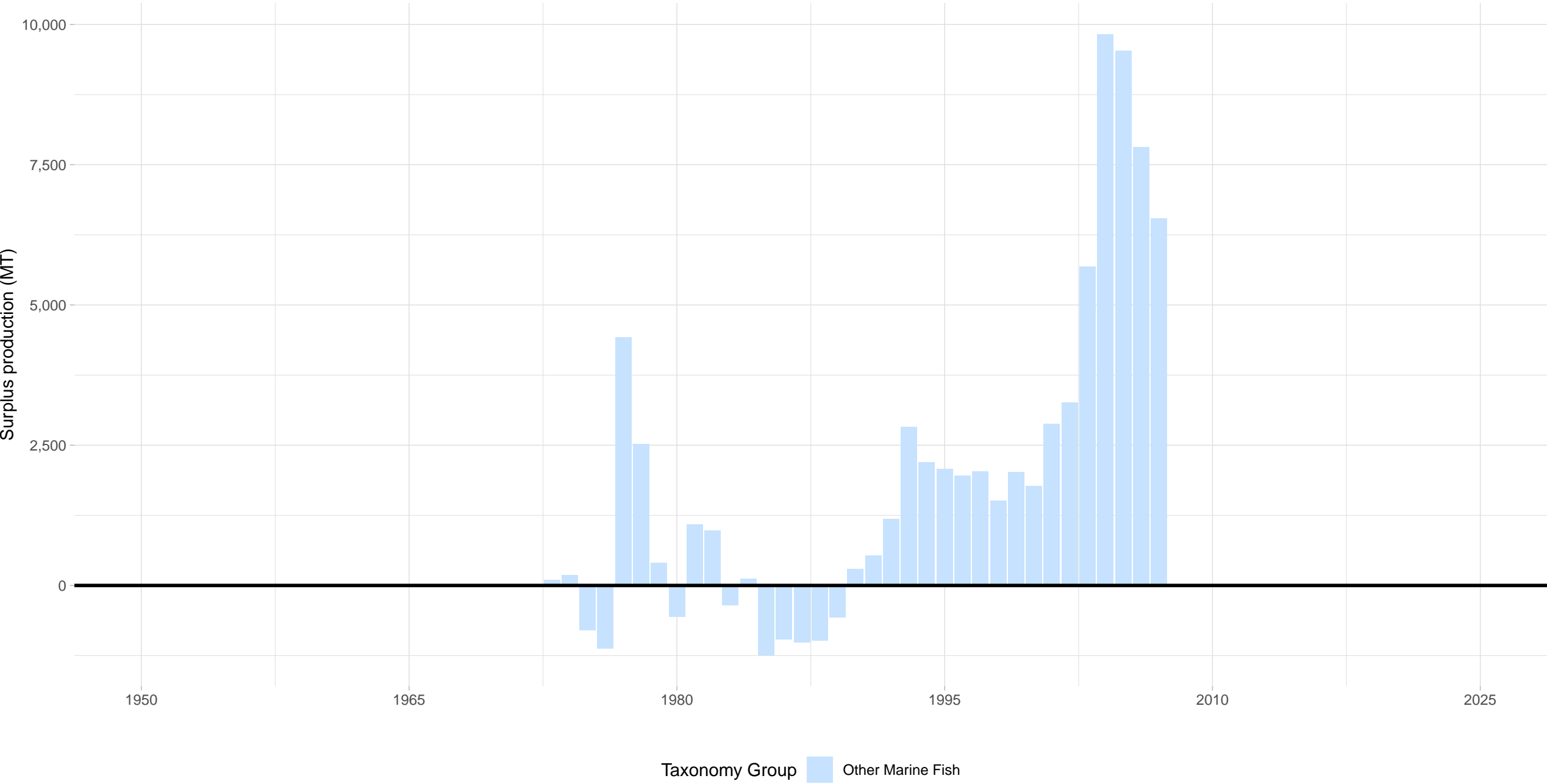
Black oreo West end of Chatham Rise – New Zealand Region

Stock represents 12% of average absolute surplus production



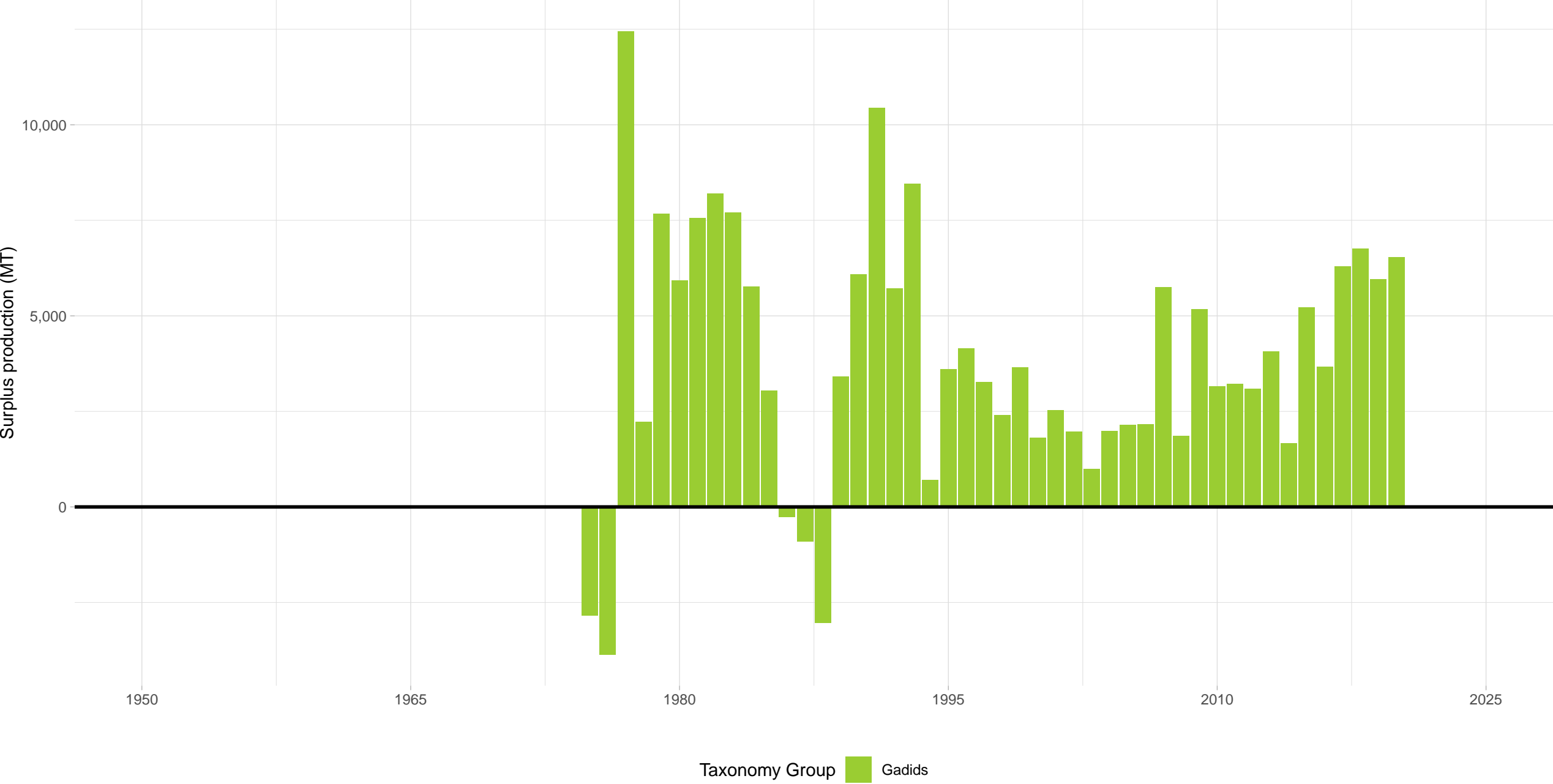
Ling New Zealand Areas LIN 7WC–WCSI – New Zealand Region

Stock represents 14% of average absolute surplus production



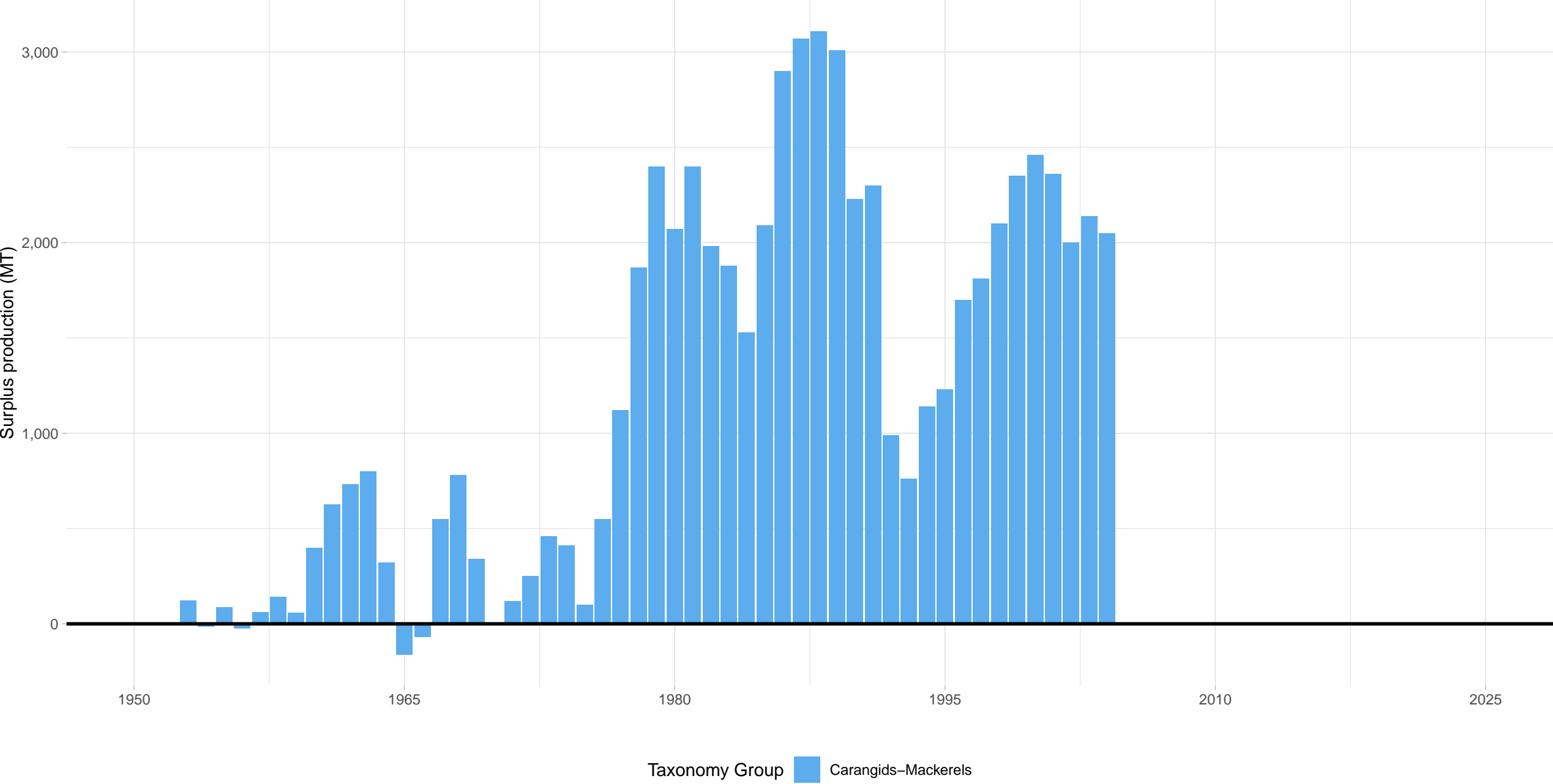
Southern hake West Coast South Island – New Zealand Region

Stock represents 27% of average absolute surplus production

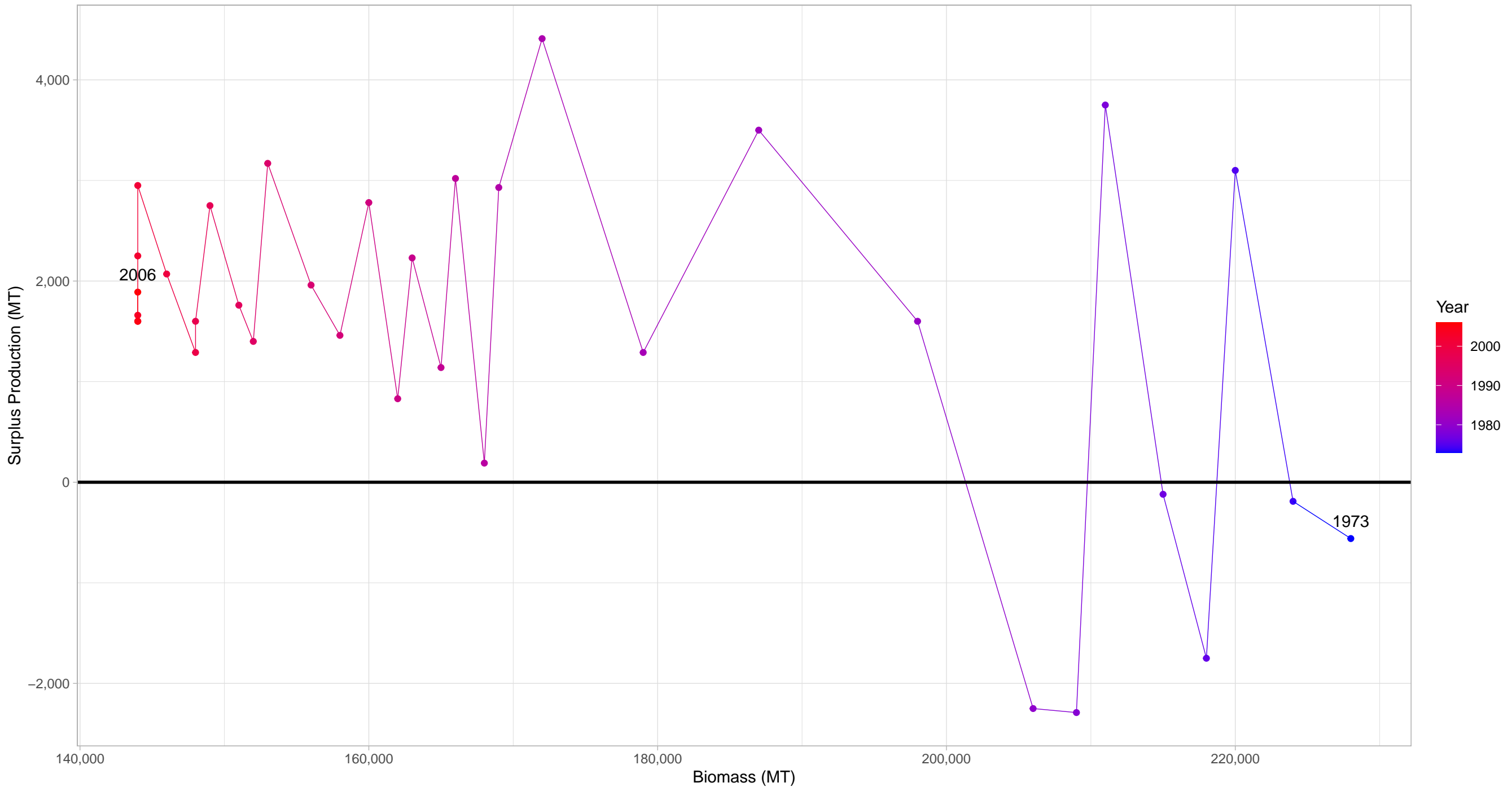


Trevally New Zealand Areas TRE 7 – New Zealand Region

Stock represents 7% of average absolute surplus production

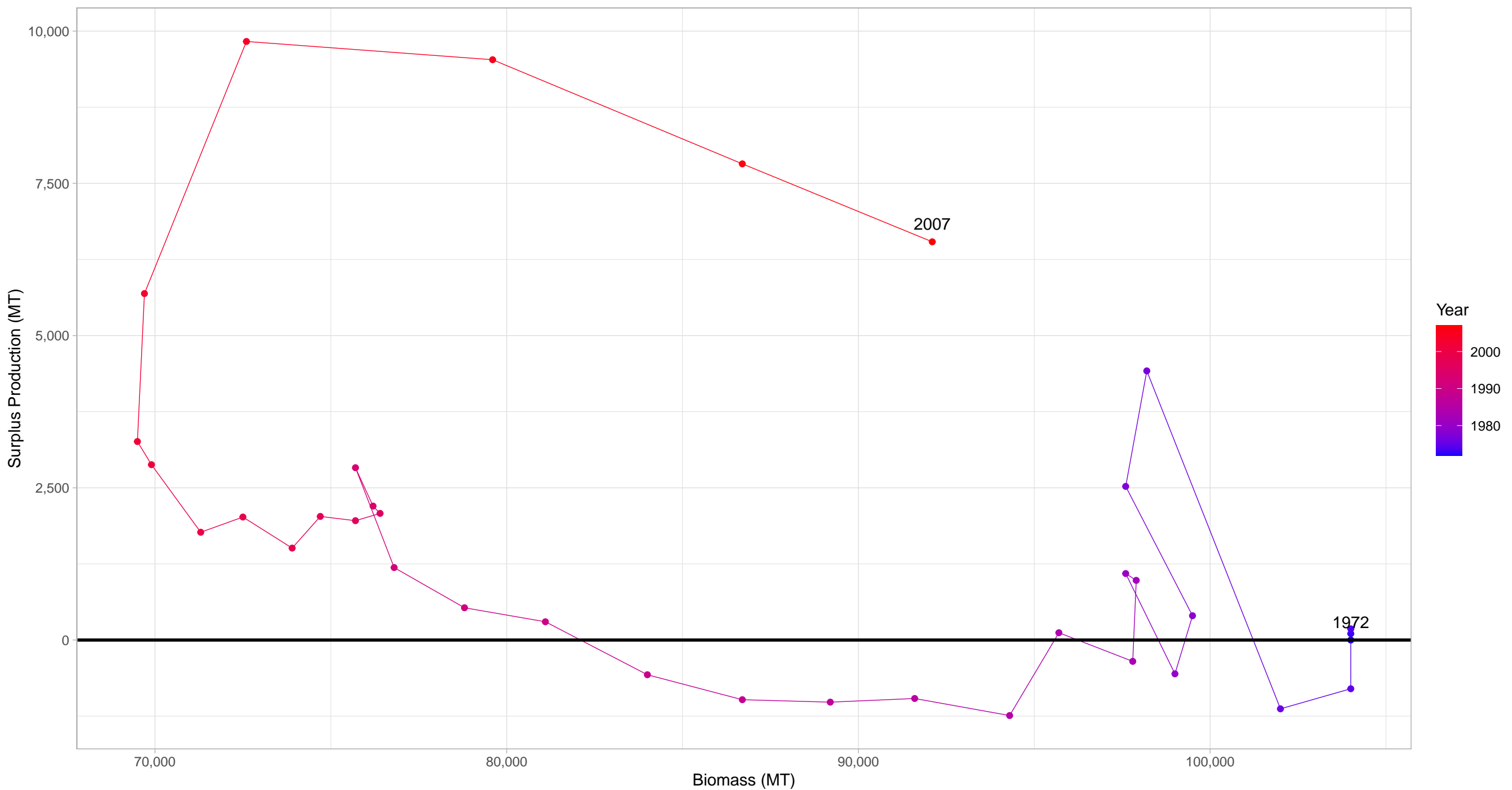


Black oreo West end of Chatham Rise in New Zealand Region



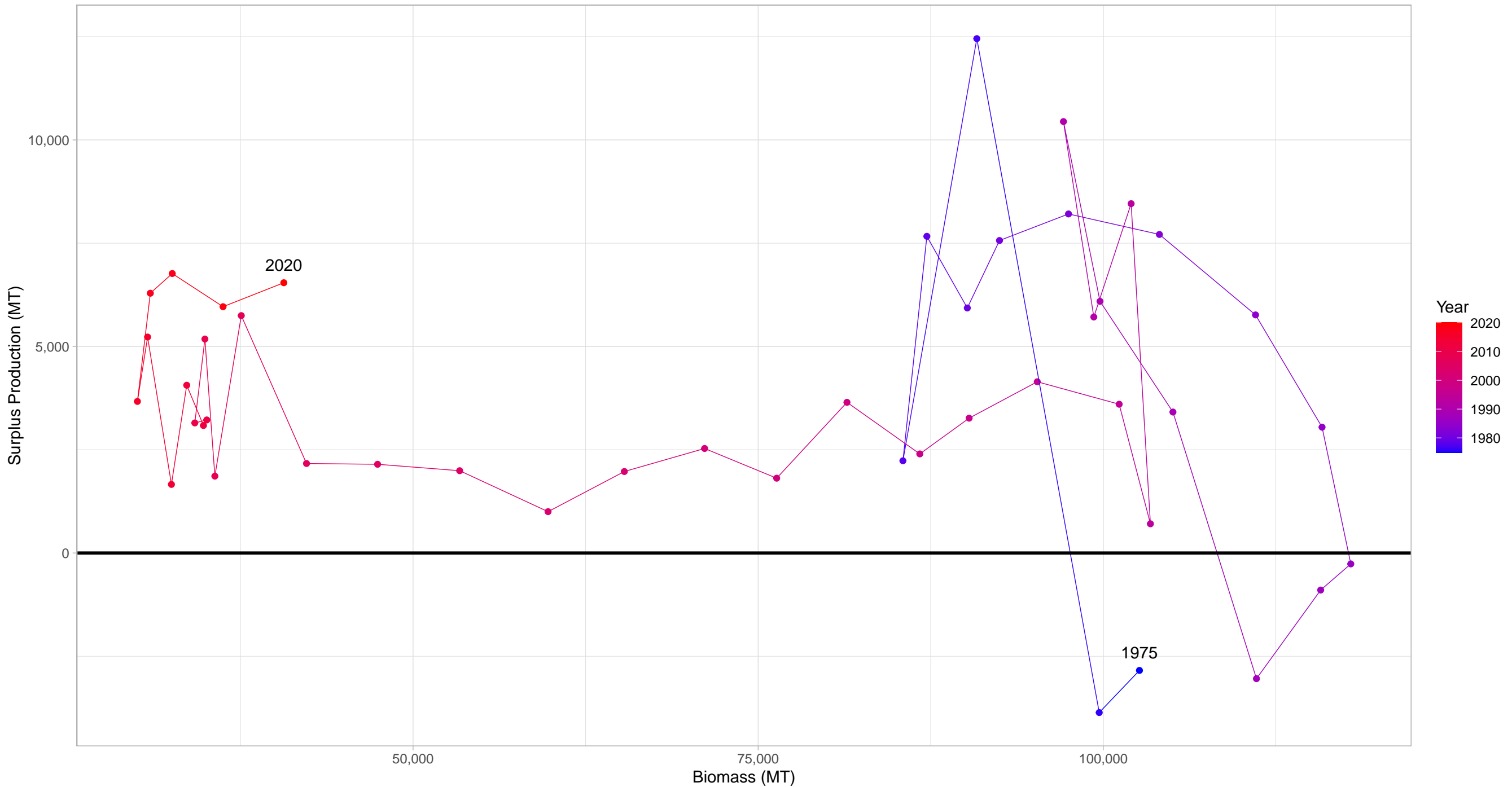
First and last years with recorded surplus production are labeled

Ling New Zealand Areas LIN 7WC–WCSI in New Zealand Region



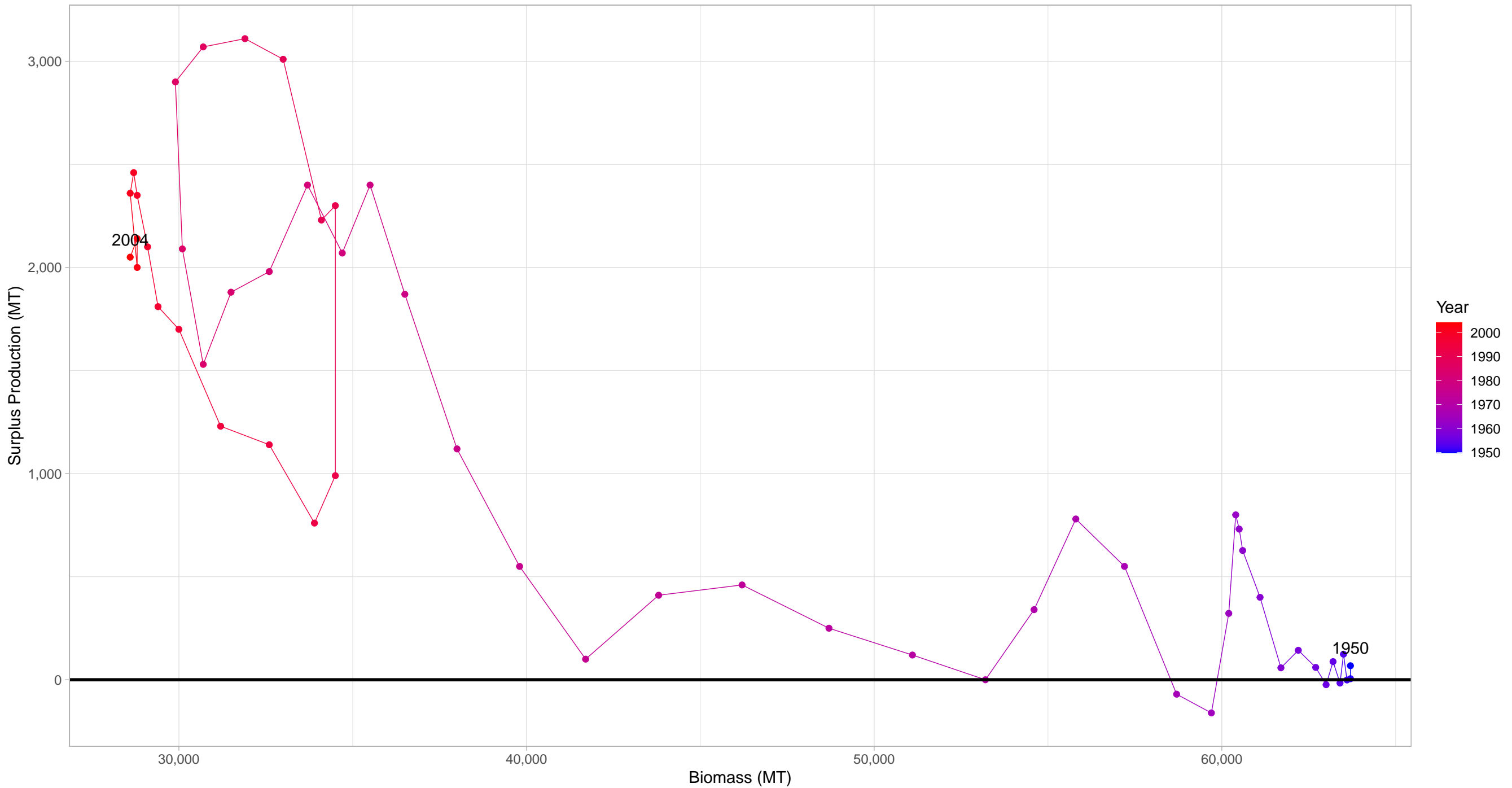
First and last years with recorded surplus production are labeled

Southern hake West Coast South Island
in New Zealand Region



First and last years with recorded surplus production are labeled

Trevally New Zealand Areas TRE 7 in New Zealand Region



First and last years with recorded surplus production are labeled